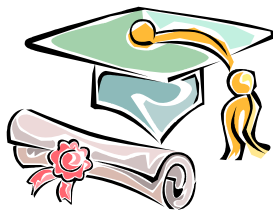




## **GENE & MARILYN NUZIARD SCHOLARSHIP & LOAN FUND**



### **Application Package**

**QueensCare**  
**Gene & Marilyn Nuziard Scholarship & Loan Fund**  
**1300 North Vermont Avenue Suite 1002**  
**Los Angeles, California 90027**  
**Tel: (323) 669-4301**  
**Fax: (323) 953-6244**  
**[www.queenscare.org](http://www.queenscare.org)**



is pleased to announce the formation of the

***Gene & Marilyn Nuziard Scholarship & Loan Fund***

QueensCare, a public charity providing healthcare to the low-income uninsured residents of Los Angeles County is pleased to announce the establishment of the Gene and Marilyn Nuziard Scholarship and Loan Fund (“The Nuziard Scholarship Fund”). The Fund has been created in recognition of the need for additional health care practitioners to provide accessible health care for uninsured and low-income working individuals and families throughout the United States but particularly in Los Angeles County, California.

QueensCare presently provides primary, dental and vision care through its partnership with the QueensCare Family Clinics at six inner-city high-volume primary care clinics. On staff are approximately 30 physicians, nurse practitioners and dentists. In addition, it contracts with approximately 60 physician specialists in most fields of medicine who are in private practice, but serve under contract with QueensCare to provide specialty care to those who qualify.

Through the QueensCare Health & Faith Partnership, QueensCare operates a parish nursing program for churches of all denominations, non-public schools, and faith based social service agencies in its service area. QueensCare also operates mobile vision and dental programs for students in low-income Los Angeles Unified School District schools in the service area.

The Nuziard Scholarship Fund honors the contributions of Gene and Marilyn Nuziard for their longtime assistance to QueensCare. A graduate of Illinois Wesleyan University, Mr. Nuziard spent his entire 40-year career in the baking industry. He has served as past chair of the board of directors of Queen of Angels-Hollywood Presbyterian Medical Center and past chair of the board of QueensCare. He currently serves as a member of the board of QueensCare. Marilyn Carlson Nuziard is an alumna of Northwestern University with a Master’s degree in speech therapy and audiology.

The Nuziards have enhanced QueensCare and its activities on behalf of the poor with their keen executive knowledge and sensibilities, the content of their character, and their unstinting service as unpaid consultants over thousands of hours.

Eligible applicants for assistance from the Nuziard Scholarship Fund must be United States citizens or legal residents who are enrolled in Illinois Wesleyan University, Northwestern University, or any California state university, community college, or private university or college whose credits upon transfer are given equal standing to those of California state institutions.

Eligibility is limited to students already enrolled or planning to enter into studies to become medical assistants, medical technicians, LVNs, registered nurses, nurse practitioners, dentists, physician’s assistants, primary care physicians, obstetricians, or other postgraduate healthcare providers. Priority may be given to bilingual students and to those who agree to practice their profession serving the low-income residents of Los Angeles County.

Assistance will be limited to tuition, fees, and books. No sums awarded may be applied to costs of room and board or transportation.

Individual awards shall not exceed \$9,000 per student for those enrolled in four-year institutions or \$2,000 for students in community colleges. Awards shall be paid directly to the institution.

Community college and professional school students chosen to receive Nuziard Scholarship Fund assistance must maintain a 2.5 GPA; undergraduate students must maintain a 3.25, and graduate students must maintain a 3.0 GPA throughout the period of the scholarship or loan.

Students who receive Nuziard Scholarship Fund loans will pay no interest while in school. Interest at the rate of 6 percent per annum will accrue each year thereafter. The entire principal sum of the loan is due and payable on or before the tenth anniversary of graduation. However, students who, upon graduation, practice their healthcare specialty serving an under served community in Los Angeles County may apply to have up to twenty percent of their loan principal forgiven for each full year of service.

The Board of Directors of Queens Care shall select all recipients without regard to age, gender, religion, national origin, race, sexual orientation, or receipt of public assistance.

For information or an application form, please write to:

QueensCare  
Gene & Marilyn Nuziard Scholarship and Loan Fund  
1300 North Vermont Avenue Suite 1002  
Los Angeles, CA 90027  
Tel: (323) 669-4301  
Fax: (323) 953-6244



## **Gene & Marilyn Nuziard Healthcare Scholarship & Loan Fund Application Process**

### **Applicants are required to submit:**

1. A Gene & Marilyn Nuziard Scholarship & Loan Fund Application.
2. A one page typed personal statement addressing the following:
  - Achievements
  - Academic Potential
  - Career Goals
  - Community and/or school involvement
3. Scholarship and Student Loan Applicants are required to submit two “Recommendation Forms” with letters of recommendation attached. One letter must be from a teacher or professor. Loan forgiveness and repayment applicants are required to submit two “Recommendation Forms” with letters of recommendation attached. One letter must be from a supervisor. The second letter of recommendation may be from any of the following: teacher, professor, guidance counselor, community leader, church leader, and/or immediate supervisor.

The individual (evaluator) should comment on your scholastic achievements and personal strengths such as enrollment, academic abilities and potential, maturity, motivation, self-confidence, leadership, perseverance, extra curricular activities, and community involvement.

4. FAFSA
5. Official Transcripts
6. Curriculum Vitae
7. Most recent federal income tax return form 1040 or 1040EZ

Application Deadline: All materials must be delivered by May 1<sup>st</sup> to:

QueensCare  
Gene & Marilyn Nuziard Scholarship Fund  
1300 North Vermont Avenue, Suite 1002  
Los Angeles, CA 90027

Note: It is the responsibility of the applicant to verify the completeness of his/her application and submit it to QueensCare by the deadline. Incomplete applications will not be included in the pool for consideration.

Notification: Applicants will be notified by mail.

Information: If you have any questions or need assistance with the application process, please contact QueensCare at (323) 669-4301.



## **Gene & Marilyn Nuziard Scholarship & Loan Fund**

### **Scholarship & Loan Eligibility Requirements**

#### **Enrollment:**

Scholarship applicant must be enrolled in, or accepted and planning to enter into studies to become a health professional listed below. Loan repayment or forgiveness applicants must be employed full time in one of the professions listed below and must be serving in a medically underserved area of Los Angeles County:

- Medical Assistant
- Medical Technician
- LVN
- Registered Nurse
- Nurse Practitioner
- Dentist
- Physician's Assistant
- Primary Care Physician
- Obstetrician, or
- Other Postgraduate Healthcare provider.

**Application Deadline:                      May 1st**

#### **Eligible Colleges and Universities**

- Illinois Wesleyan University
- Northwestern University
- Any University of California
- Any California State University
- Any California Community College
- Any private university or college located in California whose credits upon transfer are given equal standing to those of California state institutions.
- Educational institutions accredited by the California BRN or the BVNPT for RN or Vocational Nursing programs.

#### **Maximum Individual Awards per Academic School Year:**

- Up to \$9,000 per student for those enrolled in four-year institutions
- Up to \$2,000 per student for those enrolled in community colleges.

#### **Use of Scholarship Proceeds:**

- Assistance is limited to tuition, laboratory fees, books, supplies, student health insurance and a modest amount for personal expenses.
- Scholarship proceeds may not be used for room and board or transportation.

**Citizenship:** U.S. Citizenship or Legal Residency required.

**Priority may be given to:**

- Bilingual applicants
- Applicants who agree to practice their profession serving the underserved in Los Angeles County.
- Financial Need

**GPA:**

- Undergraduate students who are chosen to receive a Nuziard Scholarship must maintain a 3.25 GPA throughout the period of the scholarship. Students attending two-year community colleges and professional schools must maintain a 2.5 GPA throughout the period of the scholarship.
- Graduate students applying for assistance must demonstrate an undergraduate GPA of 3.0.

**Student Loan Terms:**

- Students who receive Nuziard Fund loans will make no payments while in school. Interest will accrue at the rate of 6% per annum.
- Payments will be made through equal monthly principal and interest payments amortized over 10 years, beginning six months after graduation.
- The entire principal sum of the loan is due and payable on or before the 11<sup>th</sup> anniversary of graduation.
- Students who, upon graduation, practice their healthcare specialty in Los Angeles County may apply to have up to 20% of their loan principal forgiven for each full year of service in Los Angeles County.

**Loan Forgiveness and Repayment:**

- Available to health professionals listed above who have completed their education and are currently working in a healthcare facility that serves the underserved of Los Angeles County, such as a community or free clinic.
- Maximum award of \$9000 per year for up to four years.

**Full-Time Employees of QueensCare and QueensCare Family Clinics**

- Full-time employees who have been employed for at least 2 years immediately prior to their application for a Nuziard loan need not prepare the FAFSA form.
- Employees must meet the scholarship and loan requirements of non-employee applicants.

**Candidate Selection:**

- The Board of Directors of QueensCare shall select all recipients without regard to age, gender, religion, national origin, race, sexual orientation, or receipt of public assistance.
- For information or an application form, please contact:

QueensCare  
Gene & Marilyn Nuziard Scholarship and Loan Fund  
1300 North Vermont Avenue Suite 1002  
Los Angeles, CA 90027



## Gene & Marilyn Nuziard Scholarship and Loan Fund

### *Frequently Asked Questions*

- *How can I apply for a scholarship or loan forgiveness?*

Most students apply for our scholarships through high school guidance counselor offices, colleges or universities. We suggest that you talk with your school and local public library to identify scholarships for which you may be eligible.

In addition, a number of online resources exist that can assist you in your search. These include:

FinAid	<a href="http://www.finaid.com">www.finaid.com</a>
College Board	<a href="http://www.collegeboard.com">www.collegeboard.com</a>
FastWeb.com	<a href="http://www.fastweb.com">www.fastweb.com</a>
Collegenet.com	<a href="http://www.collegenet.com">www.collegenet.com</a>
Scholarships.com	<a href="http://www.scholarships.com">www.scholarships.com</a>
Sallie Mae Fund	<a href="http://www.thesalliemaefund.com">www.thesalliemaefund.com</a>

- *How do I receive my scholarship award?*

Once you have completed and returned the Scholarship Acceptance/Renewal Form to our office with proper contact information, we will send a scholarship check to the financial aid office or bookstore on your behalf to your college or university in late summer before the start of the fall semester. If sent to the financial aid office, the award will be applied to your school account to cover tuition and other related school fees. If you choose to have the award paid to the campus bookstore, an account in your name will be established that you may use to purchase books and other school materials. (Please confirm with your college or university that a bookstore account can be opened with your scholarship award under your name.) The award is intended to cover the entire academic year, unless otherwise specified. **You will receive a copy of the letter we send to the financial aid office or the bookstore, so that you are notified when funds have been disbursed.** You may then go to the financial aid office/bookstore to claim your scholarship award. Please note that every college financial aid office has a different policy for applying scholarship awards; please talk with your financial aid officer ahead of time if you have questions about how the scholarship would be distributed.

- *How do I renew my scholarship?*

The Nuziard Scholarship Fund is an annual scholarship. Unless otherwise specified in the award letter, you will need to reapply each year. To renew your scholarship, you must complete the **Scholarship Renewal Application** annually and send us a copy of your most recent transcript at the completion of each school year. This transcript is used to verify that you have maintained your enrollment, and have met all other requirements, such as GPA, that may be relevant to your scholarship. You must also submit a one to two page report detailing your progress in school. Toward the end of each academic year, you will receive the Scholarship Renewal Form and a letter reminding you to forward the requested information to our office **by May 1st**.

- *When submitting my Scholarship Renewal Form, can I send unofficial transcripts?*

A: Yes, unofficial college transcripts are acceptable for conditional approval. If your scholarship is renewed, we must receive an official transcript before the funds will be released. The deadline for the official transcript is the second Tuesday in June. Transcripts need to include student's name and/or Student Identification Number. If only the Student's Identification Number is printed, please also submit a copy of your current student identification card that clearly states your name and identification number.

- *I'm concerned that the school's financial aid department will take away funds from my financial aid package because of my scholarship.*

We communicate with your college or university specifically regarding this issue, and instruct the financial aid office to apply your scholarship funds to the "self-help" portion of your financial aid package, rather than reduce the aid already made available to you. The following is an excerpt from the instructions we give schools:

*"Grant aid previously offered to the student should not be reduced unless federal or state law requires the reduction. The timing of the scholarship's application to the student's account may be flexible to best accommodate the student's financial needs. If the student's account is paid in full, the scholarship may be refunded to the student for other cost of attendance expenses."*

Alternatively, some scholars choose the bookstore option to avoid having their financial aid packages affected by the scholarship. **Please note that if the college or university does not allow scholarship awards to be applied to a bookstore account, the award will instead go to the financial aid office. (Please confirm with your college or university that a bookstore account can be opened with your scholarship award under your name.)**

Please contact us if you encounter problems when working with your financial aid office, and we will be happy to assist you as needed.

- *If my scholarship is renewed, how quickly will my scholarship award be processed and sent to my school financial aid office or bookstore?*

Once you have received notification of award and completed and returned the Scholarship Acceptance Form to our office with proper contact information, we will send a scholarship check to the financial aid office or bookstore on your behalf to your college or university in late summer before the start of the Fall semester. For Scholarship Renewal Applications submitted late or in the fall, awards may take up to three weeks for processing.

- *I was not able to return the Renewal Application by the deadline. Can I still apply?*

Yes. However, the committee that reviews these applications meets once a year and if your application is not received by the deadline, it will be held until the next meeting. Remember that it takes time for QueensCare to issue the check and for your school's financial aid office or bookstore to process all of the checks, especially at the beginning of the fall semester.

- *What if my scholarship is awarded after school has started?*

Most of our scholars are notified in late spring when they have been selected for an award, prior to the start of the fall semester. If you are selected for a scholarship at an alternative time of the year, it takes approximately three weeks to process a scholarship award once it has been approved and you have returned the Scholarship Acceptance Form. **Regardless of the month students are selected, all scholarship payments will be made directly to either the financial aid office or bookstore at the college or university.**

- *Who do I contact if the financial aid office or bookstore cannot find my scholarship award check?*

Remember that it takes time for your school's financial aid office or bookstore to process all of the checks received, especially at the beginning of the semester. If three weeks have passed after receiving your copy of the disbursement letter, please call your college or university first to confirm that they have received your scholarship award. If you continue to have a problem, please contact QueensCare.

- *I decided not to attend University A and instead will be enrolling at University B. Can I get my scholarship back from University A so that I can use it at University B?*

Yes, please contact University A's Financial Aid Office and request that they refund the money in full to QueensCare as soon as possible. They will probably do this anyhow, but receiving a call from you might help speed the process along. **We cannot re-issue the scholarship to your new school until the funds have been returned.** Since processing refunds sometimes take a long time at schools, please be aware that your scholarship may not be sent to your new school as quickly as you

would like. Once the refund has been processed, contact our office and provide us with your new school's information. We will send you a copy of the disbursement letter so that you will know when the disbursement has been made.

- *Will I have to pay taxes on this scholarship award?*

If your scholarship is used for tuition, fees, books, supplies and/or equipment required for enrollment or class attendance, the award is not taxable. A good resource on this topic can be found on the Internet at [www.irs.gov/faqs](http://www.irs.gov/faqs).

- *What does full-time status mean?*

Full-time status means that you are enrolled in a course load at your school that is greater than what part-time students carry. Each school will have a different unit minimum, although full-time status typically involves at least three to four courses. For example, at a community college full-time status is equal to a course load of 12 units. It is your responsibility to check with your college or university to ensure that you are meeting the minimum requirement(s) applicable to your award.

- *What if I don't know what my Student Identification Number is yet?*

Colleges and universities need the Student Identification Number to process scholarship awards, in case there is more than one student with the same name. If you do not know your Student Identification Number yet, please contact your school to determine what it is. If you are still unable to identify your Student Identification Number, list the last four digits of your Social Security Number instead.

- *What if I do not know what my dorm/school address is yet?*

Leave this section blank or write, "not yet known." Please be sure to contact QueensCare once you do know your school address. This way we can contact you during the school year, if necessary. It is your responsibility to ensure that QueensCare has your current contact information on file. Please feel free to contact QueensCare scholarship staff members anytime throughout the year to provide them with your updated contact information.



## Gene & Marilyn Nuziard Healthcare Scholarship and Loan Application

### GENERAL INFORMATION

\_\_\_\_\_  
Last Name First Name Middle Name

\_\_\_\_\_  
Address Apt. #

\_\_\_\_\_  
City State Zip Sex (M) Male / (F) Female

( ) ( )  
Home Phone Work Phone E-Mail Address

\_\_\_\_\_  
Date of Birth: Age: Social Security #:

Citizenship:

US Citizen \_\_\_\_\_

Permanent Resident \_\_\_\_\_ #  
Alien Registration Number

### SCHOLARSHIP APPLICANTS

School, program and degree / certification: \_\_\_\_\_

Have you been formally accepted? \_\_\_\_\_ Program start date: \_\_\_\_\_ Length of program: \_\_\_\_\_

If not accepted, when do you expect to be notified? \_\_\_\_\_ For academic year / program start date: \_\_\_\_\_

If currently enrolled in the program, how many semesters / months remaining to completion? \_\_\_\_\_

Are you attending full time (12 units or more per semester)? \_\_\_\_\_ If part time, how many units? \_\_\_\_\_

Estimated annual tuition, fees and books: \$ \_\_\_\_\_ Scholarship Requested: \$ \_\_\_\_\_

Have you been awarded any other scholarship or grant for the academic year for which you are applying? \_\_\_\_\_

If yes, what is the amount of the award? \$ \_\_\_\_\_ What will the award fund? \_\_\_\_\_

Your annual income: \$ \_\_\_\_\_ Number of family members living in your household? \_\_\_\_\_

Parents Annual Income (if you are a dependent): \$ \_\_\_\_\_ Number of family in your household? \_\_\_\_\_

### CAREER OBJECTIVE

Medical Assistant \_\_\_\_\_ Medical Technician \_\_\_\_\_ Dental Assistant \_\_\_\_\_ Dental Technician \_\_\_\_\_

LVN \_\_\_\_\_ RN \_\_\_\_\_ RNP \_\_\_\_\_ PA \_\_\_\_\_

Dentist \_\_\_\_\_ Physician \_\_\_\_\_ If so, what specialty? \_\_\_\_\_

Other Post Graduate Healthcare Provider (specify): \_\_\_\_\_

**LOAN REPAYMENT APPLICANTS**

Employer: \_\_\_\_\_ Position: \_\_\_\_\_ Tel: \_\_\_\_\_ Fax: \_\_\_\_\_

Address \_\_\_\_\_ City \_\_\_\_\_ State \_\_\_\_\_ Zip \_\_\_\_\_  
Full time: \_\_\_\_\_ Part time: \_\_\_\_\_ Number of hours per week: \_\_\_\_\_ Hire Date: \_\_\_\_\_  
Lender : \_\_\_\_\_ \$ \_\_\_\_\_ \$ \_\_\_\_\_ Yes \_\_\_\_\_ No \_\_\_\_\_  
Name \_\_\_\_\_ Current Loan Balance \_\_\_\_\_ Monthly Payment \_\_\_\_\_ Past Due? \_\_\_\_\_

**EDUCATION**

**Highest level of education completed: List name of school, major and year graduated.**

High School Diploma \_\_\_\_\_  
Associate's Degree \_\_\_\_\_  
Bachelor's Degree \_\_\_\_\_  
Master's Degree \_\_\_\_\_  
PhD \_\_\_\_\_  
MD \_\_\_\_\_  
DDS \_\_\_\_\_  
Other \_\_\_\_\_

License # (if applicable) \_\_\_\_\_

If diploma or degree was conferred to you under a different name, please state the name to which it was conferred.

Please list languages where you are proficient, including level of written and verbal fluency. \_\_\_\_\_

**OTHER**

Have you ever been convicted of a felony or misdemeanor? No \_\_\_\_\_ Yes (Please explain) \_\_\_\_\_

Have you ever been convicted of possessing or selling illegal drugs? No \_\_\_\_\_ Yes (Please explain) \_\_\_\_\_

Extra Curricular Activities, Achievements, Awards: (List only activities within the past 2 years.) \_\_\_\_\_

Employment / Volunteer History (Past three years)

Name: \_\_\_\_\_ Position: \_\_\_\_\_ From: \_\_\_\_\_ To: \_\_\_\_\_

Name: \_\_\_\_\_ Position: \_\_\_\_\_ From: \_\_\_\_\_ To: \_\_\_\_\_

Name: \_\_\_\_\_ Position: \_\_\_\_\_ From: \_\_\_\_\_ To: \_\_\_\_\_

**Certification:**

I certify that I have provided complete and accurate responses to the items on this application. I further certify all documents submitted to support this application are authentic and unaltered records that pertain to me. I certify that I will use scholarship funds for educationally related expenses. If approved for the loan repayment program, I agree to notify QueensCare and / or its designee within 10 days if my current employment is terminated or my status changes from full time. My signature certifies the accuracy and completeness of the information provided. I understand that any misrepresentation may be cause for denial or cancellation of awards offered or granted. I also understand that all scholarships or loans given to me must be claimed within one year of being awarded.

Signature: \_\_\_\_\_ Date: \_\_\_\_\_

Application Rev'd. 12-07

**QueensCare - Gene & Marilyn Nuziard Scholarship & Loan Fund**

**SECTION A: To be completed by the applicant**

Name: \_\_\_\_\_  
Last First Middle

Address: \_\_\_\_\_ Phone: \_\_\_\_\_  
City, State, Zip

**SECTION B: To be completed by the evaluator**

Name of Evaluator: \_\_\_\_\_ Title: \_\_\_\_\_

Relationship to the applicant: \_\_\_\_\_ Length of Acquaintance: \_\_\_\_\_

*In comparison to others, I would rate this candidate as:*

	Exceptional	Above Average	Average	Below Average	No Basis for Comparison
<b>Written Expression</b>	<input type="checkbox"/>	<input type="checkbox"/>	<input type="checkbox"/>	<input type="checkbox"/>	<input type="checkbox"/>
<b>Maturity</b>	<input type="checkbox"/>	<input type="checkbox"/>	<input type="checkbox"/>	<input type="checkbox"/>	<input type="checkbox"/>
<b>Motivation</b>	<input type="checkbox"/>	<input type="checkbox"/>	<input type="checkbox"/>	<input type="checkbox"/>	<input type="checkbox"/>
<b>Self-Confidence</b>	<input type="checkbox"/>	<input type="checkbox"/>	<input type="checkbox"/>	<input type="checkbox"/>	<input type="checkbox"/>
<b>Leadership</b>	<input type="checkbox"/>	<input type="checkbox"/>	<input type="checkbox"/>	<input type="checkbox"/>	<input type="checkbox"/>
<b>Commitment</b>	<input type="checkbox"/>	<input type="checkbox"/>	<input type="checkbox"/>	<input type="checkbox"/>	<input type="checkbox"/>

*I would recommend this candidate:*

	Enthusiastically	Strongly	Fairly Strong	With Reservation	Not Recommended
<b>Academic Potential</b>	<input type="checkbox"/>	<input type="checkbox"/>	<input type="checkbox"/>	<input type="checkbox"/>	<input type="checkbox"/>
<b>Character &amp; Personal Promise</b>	<input type="checkbox"/>	<input type="checkbox"/>	<input type="checkbox"/>	<input type="checkbox"/>	<input type="checkbox"/>

Signature: \_\_\_\_\_ Date: \_\_\_\_\_

*To the evaluator:*

On official letterhead, please provide the Scholarship Committee with your brief assessment (one page typed) of the candidate. Of particular interest to the committee are:

- The candidate's ability to succeed academically or professionally.
- The candidate's ability to overcome obstacles
- The candidate's interests, work/study habits, achievements, and future goals.

*Please attach your letter recommendation to this Evaluation Form and mail to:*

QueensCare  
Gene & Marilyn Nuziard Scholarship & Loan Fund  
1300 North Vermont Avenue Suite 1002  
Los Angeles, CA 90027

Faxed applications are acceptable: (323) 953.6244

To the student: Please provide to your evaluator a stamped, addressed envelope for the Evaluation Form.